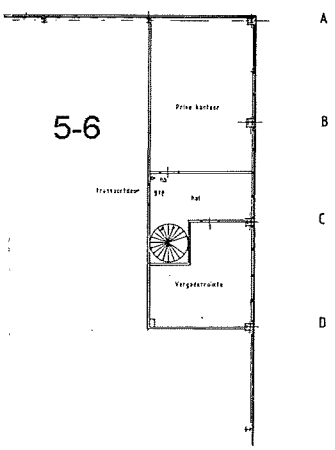
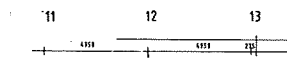


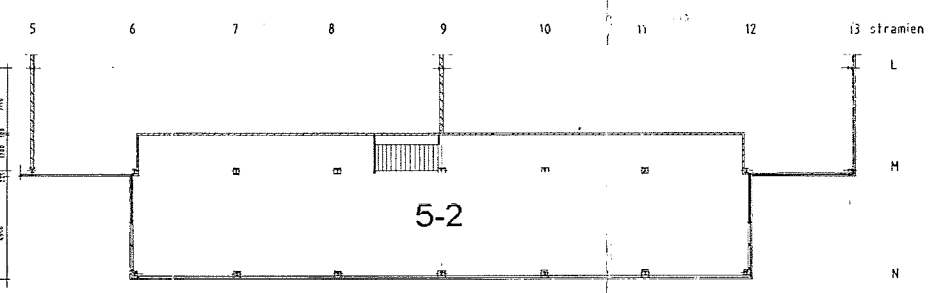
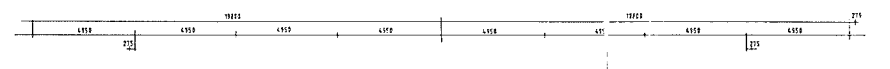
1e verdieping stramien 1 t/m 5 A t/m F

1e verdieping stramien 1 t/m 5 L t/m N

begane grond hal D stramien 11/m 13 A t/m H



1e verdieping stramien 9 t/m 13 A t/m F



1e verdieping stramien 5 t/m 13 L t/m N

HUISNUMMER

1	gevels 100 mm
2	gevels 150 mm
3	gevels 200 mm
4	gevels 250 mm
5	gevels 300 mm
6	gevels 350 mm
7	gevels 400 mm
8	gevels 450 mm
9	gevels 500 mm
10	gevels 550 mm
11	gevels 600 mm
12	gevels 650 mm
13	gevels 700 mm